

Fillings- Amalgam (Silver) White (Bonding/Resin/Composite)



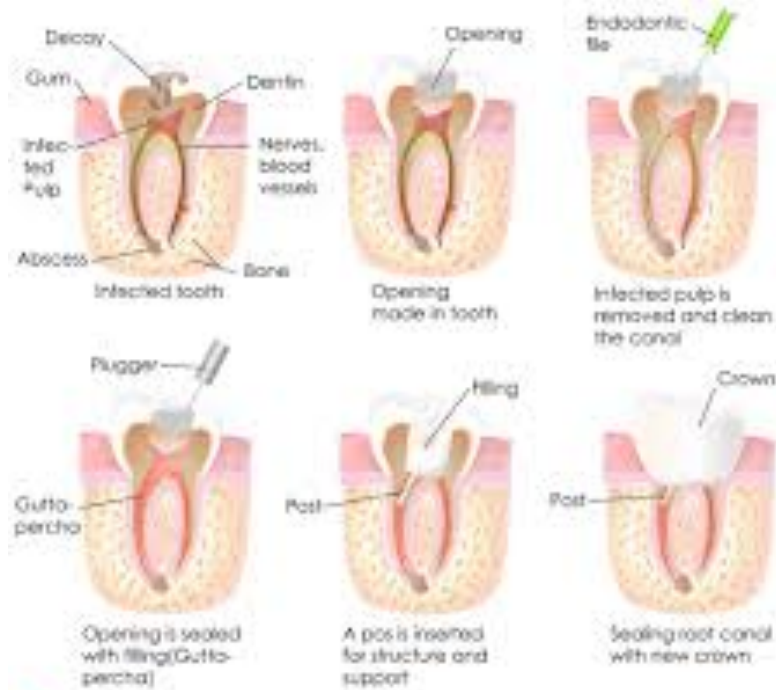
Before Fillings




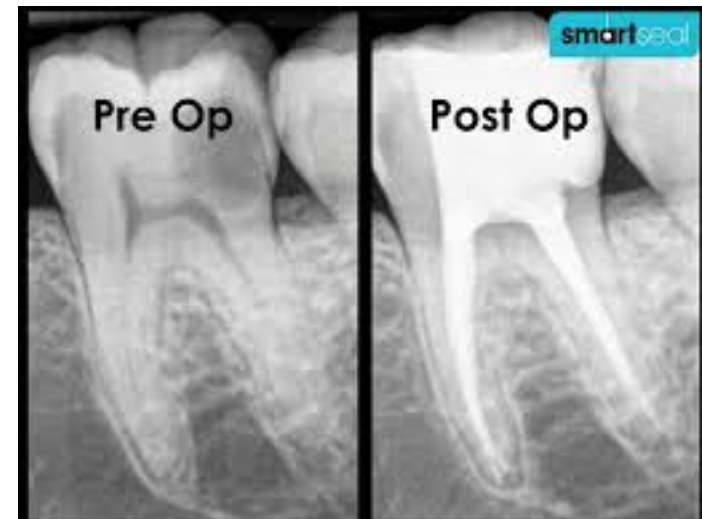
After Composite Fillings



Root Canal – RCT



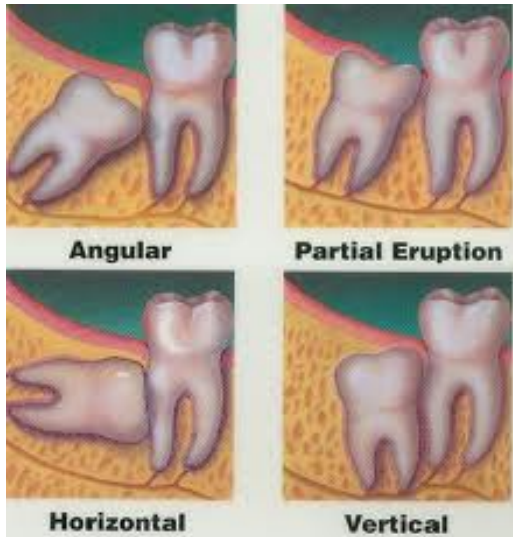
 Biology **Root Canal Procedure**



Missing -Extracted



Impacted Teeth - Wisdom teeth



Crowns – PFM, Gold, SS



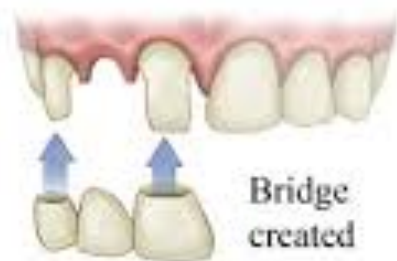
Bridge



Missing tooth



Adjacent teeth prepared



Bridge created

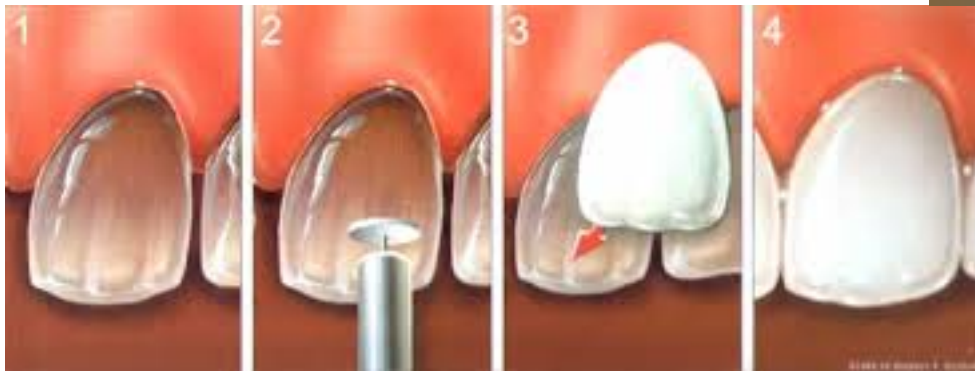


Bridge in place



DENTAL BRIDGE FOR MISSING FRONT TOOTH

Veneer



Partials/Full Dentures



Implants



Missing Tooth



Insertion of Titanium Post



Sealants



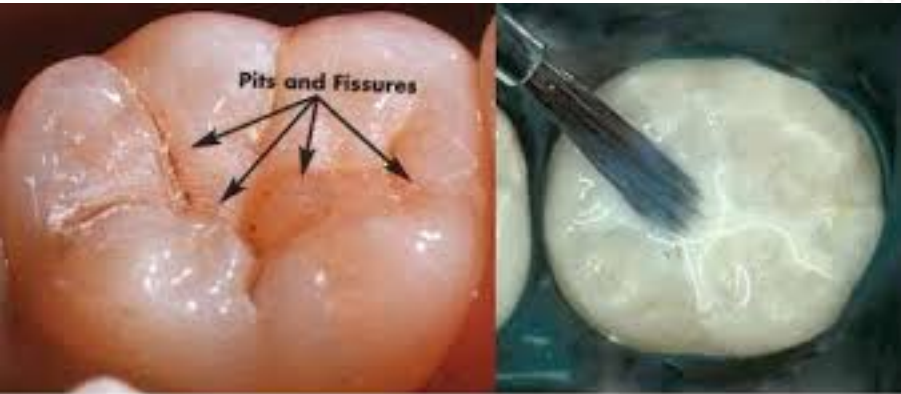
Chewing surface of a molar before sealant is applied.



The tooth surface is etched with a mild solution to help the sealant adhere.

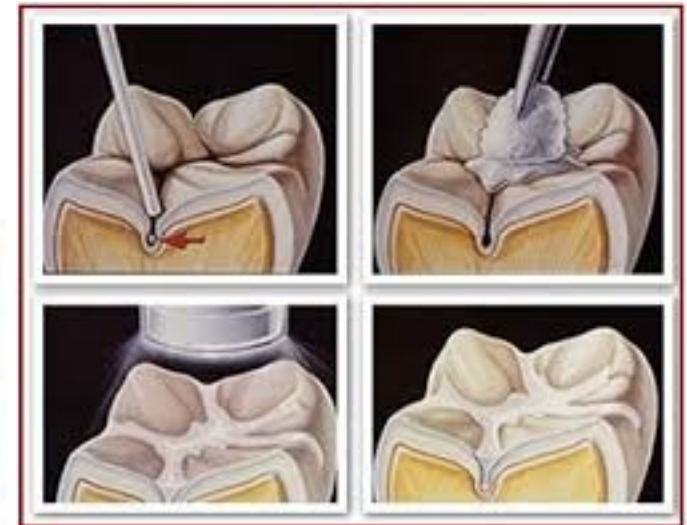


Chewing surface of a molar protected by a shaded sealant.



Before

After



Inlay/Onlay/Crown

